

Basic Driver Card

C100B, C100DB, C101BU + C102B

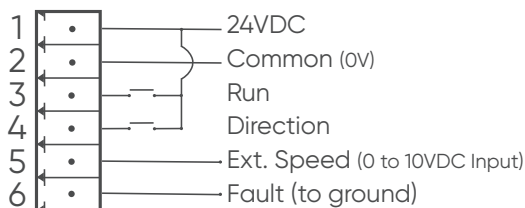
Wiring

Power and Control Wiring

Pin	Function
1	24VDC
2	Common (0V)
3	Run
4	Direction
5	External (analog) speed input
6	Fault

Table B4
Control Port
Wiring

The power connector is Pin 1 on the motor control receptacle. Power to the **Basic Driver Card** must be 24VDC. Power supplies should be sized to allow each zone to draw 2.5 amps continuously for 22W motors, and at least 3.0 amps for 35W InfiniDrive™ Motor Driven Rollers.

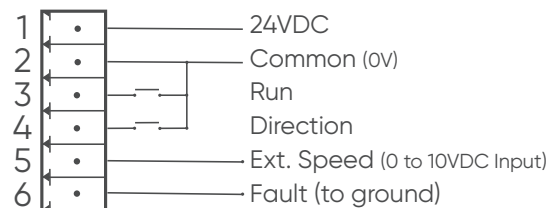


PNP Wiring Diagram

External Speed Control

Pin 5 can be used for speed control using the output of an analog device, like a PLC. The external speed control signal can be used to set motor run speed to approximately 25-100% of the motor speed range. When connecting the output of an external speed control, you must configure the control to output 0-10VDC relative to Pin 2 and DIP Switches 5-8 must be set to OFF.

Signal voltage on PIN 5 cannot exceed 10VDC or it WILL damage the driver card.



NPN Wiring Diagram

NOTES:

1. The basic driver card **MUST** share common with the Control I/O.
2. Basic driver cards will be shipped as PNP. If NPN is required, please specify at time of order.
3. Removing the cover will void the driver card warranty.
4. Running motor speed below 25% or above 100% is not recommended and may void warranty.
5. All fault signals connected to Pin 6 are 24VDC to ground.